

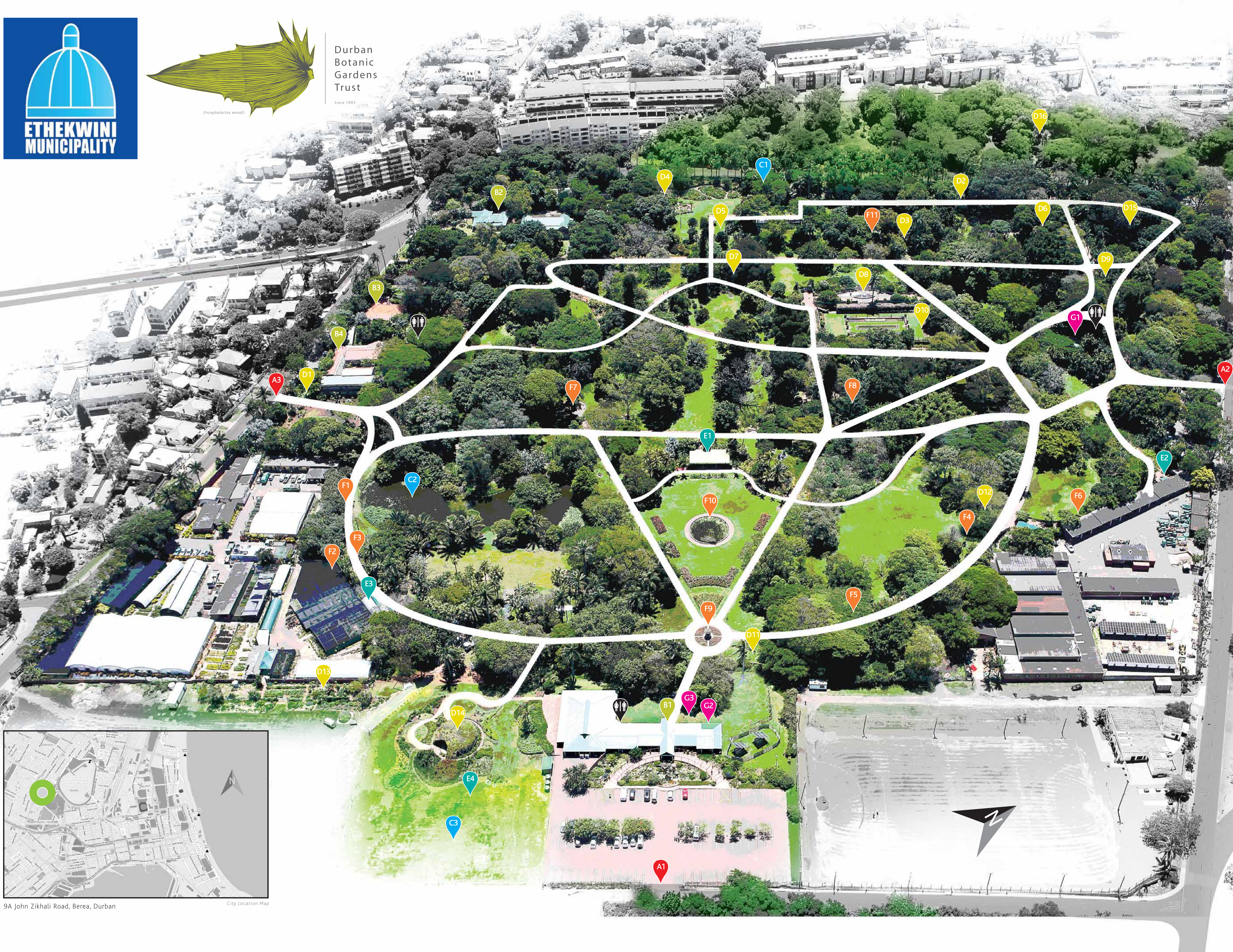
Durban Botanic Gardens Trust

Since 1993



9A John Zikhali Road, Berea, Durban

City Location Map



- A1 Main Entrance & Parking
- A2 Tea Garden Entrance & Parking
- A3 Pedestrian Entrance
- B1 Visitors' Complex & Information Centre
- B2 KwaZulu-Natal Herbarium
- B3 Curator's Office
- B4 Parks, Leisure & Cemeteries Admin Office
- C1 Reservoir
- C2 Lake
- C3 uMphafa
- D1 Courtyard Garden
- D2 Palm Walk
- D3 Fern Dell
- D4 Herb Garden
- D5 Wood's Cycad
- D6 Amphitheatre
- D7 Japanese Garden
- D8 Garden of the Senses
- D9 Monocotyledon Garden
- D10 Sunken Garden
- D11 Jubilee Gates
- D12 Bromeliad Garden
- D13 Permaculture Garden
- D14 Butterfly Habitat Garden
- D15 uMphafa Tree Trail
- D16 Edith Benson
- E1 Ernest Thorp Orchid House
- E2 Discovery Room, Education Centre
- E3 Biodiversity Display House
- E4 Butterfly Habitat Training Room
- F1 Currie's Fountain
- F2 Sculpture "Family"
- F3 Sculpture "Earth Mother"
- F4 Sculpture "Greatest Shoal on Earth"
- F5 Sculpture "Standing Parker 1"
- F6 SA Flag
- F7 Dr John Medley Wood Bust
- F8 Bell Tower
- F9 "Gazebo"
- F10 Lily Pond
- F11 Sculpture "Captive of the Beginning"
- G1 Tea Garden
- G2 Golf Cart Tours
- G3 Gourmet Coffee Cart

Durban Botanic Gardens

ESTABLISHED 1849